

Matheny Goldman

ARCHITECTURE + INTERIORS, LLC
108 WOODSON STREET, HUNTSVILLE, ALABAMA 35801
256.532.0961 | WWW.MATHENYGOLDMAN.COM
HUNTSVILLE | NASHVILLE

CONSULTANT'S LOGO

MILESTONES

DESIGN REVIEW 2019.08.23

A NEW FACILITY FOR
**ELECTRONICS BLVD.
WAREHOUSE**
HUNTSVILLE, ALABAMA

REVISIONS

REV DESCRIPTION DATE

PROJECT NO. 19-XXX

DRAWN BY CJS

CHECKED BY CJS

STAMP

SHEET TITLE

MAIN LEVEL PLAN

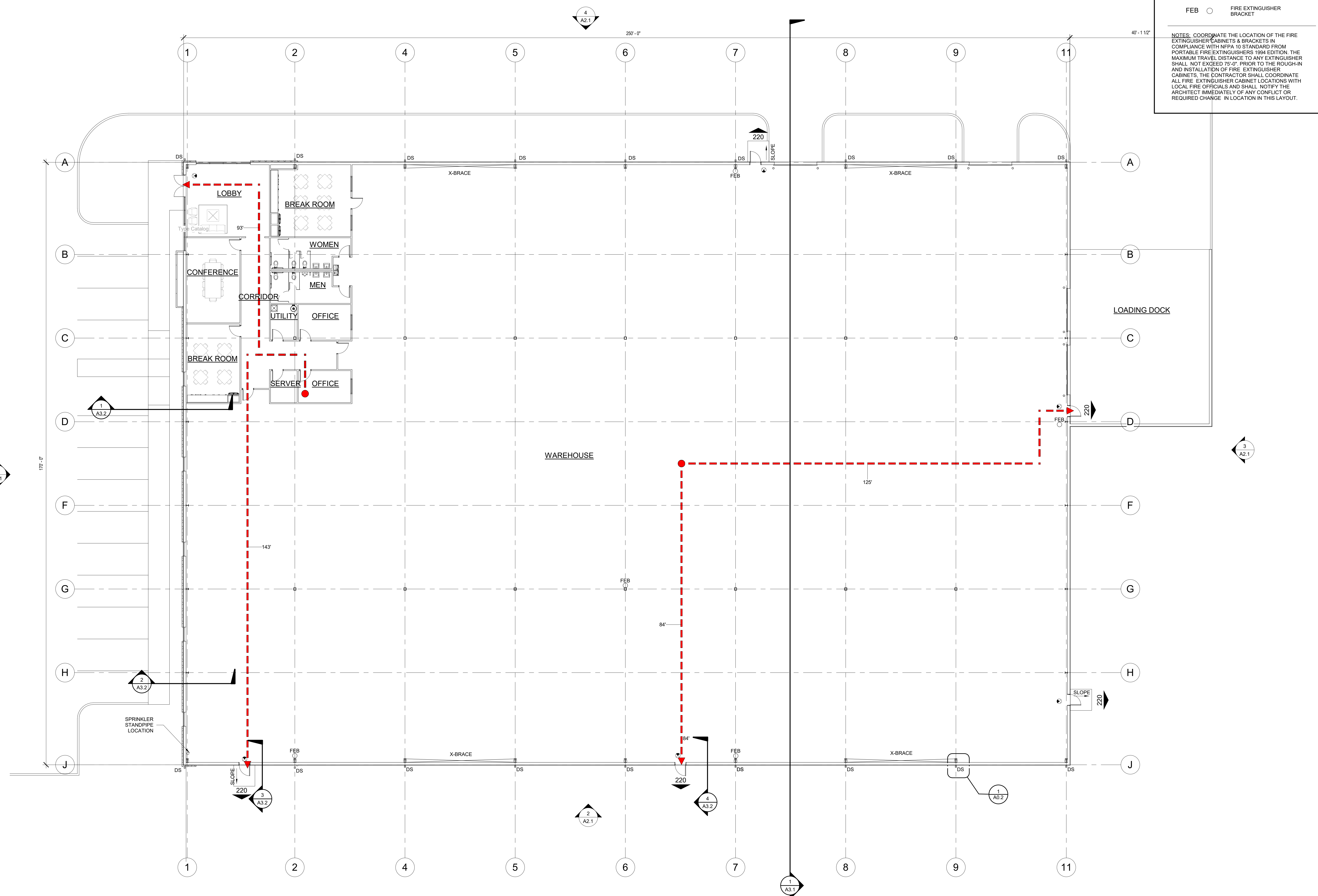
A1.1

TOTAL SHEETS = XX

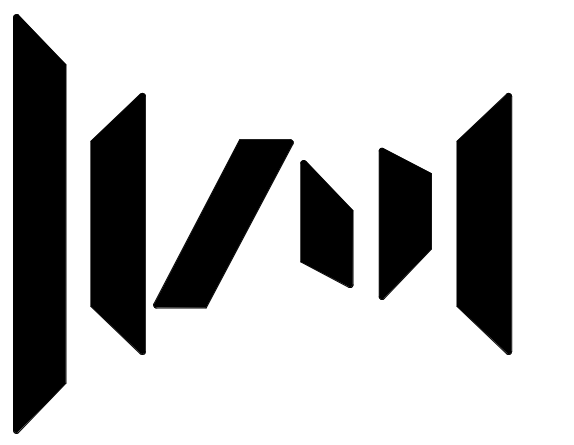
LIFE SAFETY LEGEND

- EXIT CAPACITY (OCCUPANTS)
- DISTANCE AND PATH OF TRAVEL
- EXIT LIGHT
- FIRE EXTINGUISHER BRACKET

NOTES: COORDINATE THE LOCATION OF THE FIRE EXTINGUISHER CABINETS & BRACKETS IN COMPLIANCE WITH NFPA 10 STANDARD FROM PORTABLE FIRE EXTINGUISHERS 1994 EDITION. THE MAXIMUM TRAVEL DISTANCE TO ANY EXTINGUISHER SHALL NOT EXCEED 75'-0" PRIOR TO THE ROUGH-IN AND INSTALLATION OF FIRE EXTINGUISHER CABINETS. THE CONTRACTOR SHALL COORDINATE ALL FIRE EXTINGUISHER CABINET LOCATIONS WITH LOCAL FIRE OFFICIALS AND SHALL NOTIFY THE ARCHITECT IMMEDIATELY OF ANY CONFLICT OR REQUIRED CHANGE IN LOCATION IN THIS LAYOUT.



1 MAIN LEVEL PLAN
A1.1 3/32" = 1'-0"



Matheny Goldman

ARCHITECTURE • INTERIORS, LLC
108 WOODSON STREET, HUNTSVILLE, ALABAMA 35891
256.532.0961 | WWW.MATHENYGOLDMAN.COM
HUNTSVILLE | NASHVILLE

CONSULTANT'S LOGO

MILESTONES

DESIGN REVIEW 2019.08.23

A NEW FACILITY FOR
ELECTRONICS BLVD.
WAREHOUSE
HUNTSVILLE, ALABAMA

REVISIONS

REV DESCRIPTION DATE

PROJECT NO. 19-XXX

DRAWN BY CJS

CHECKED BY CJS

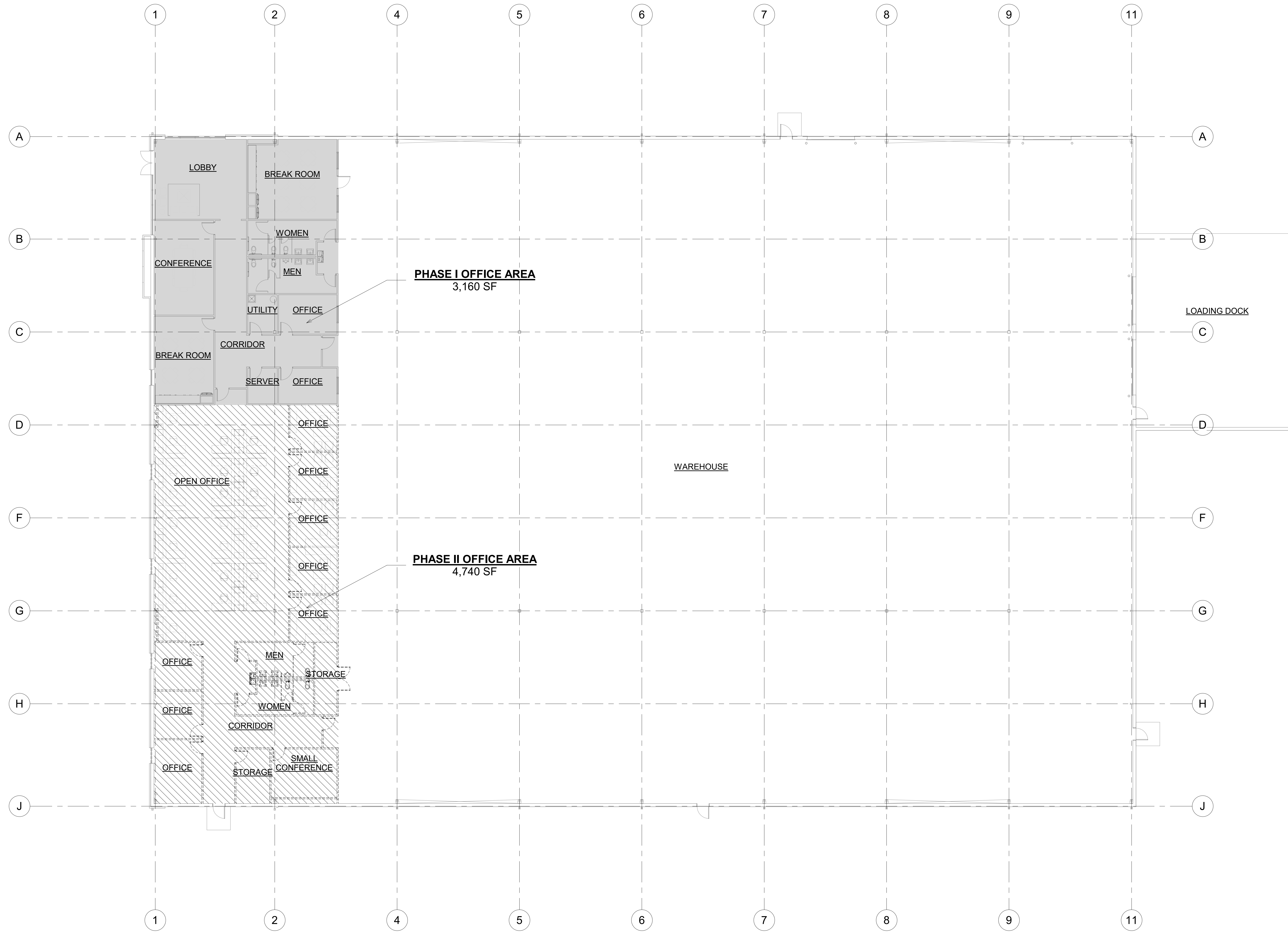
STAMP

SHEET TITLE

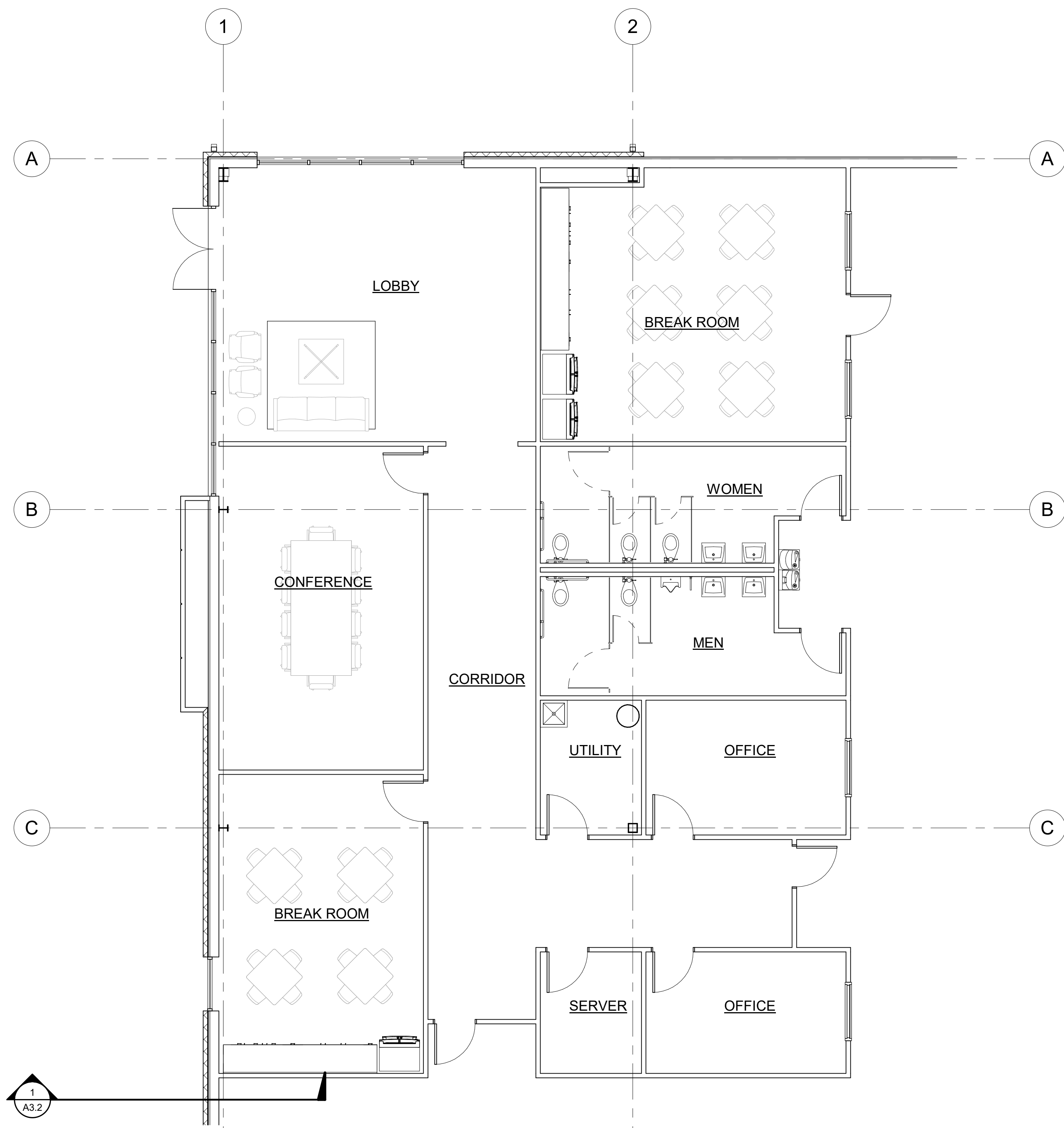
FUTURE FLOOR PLAN

A1.2

TOTAL SHEETS = XX

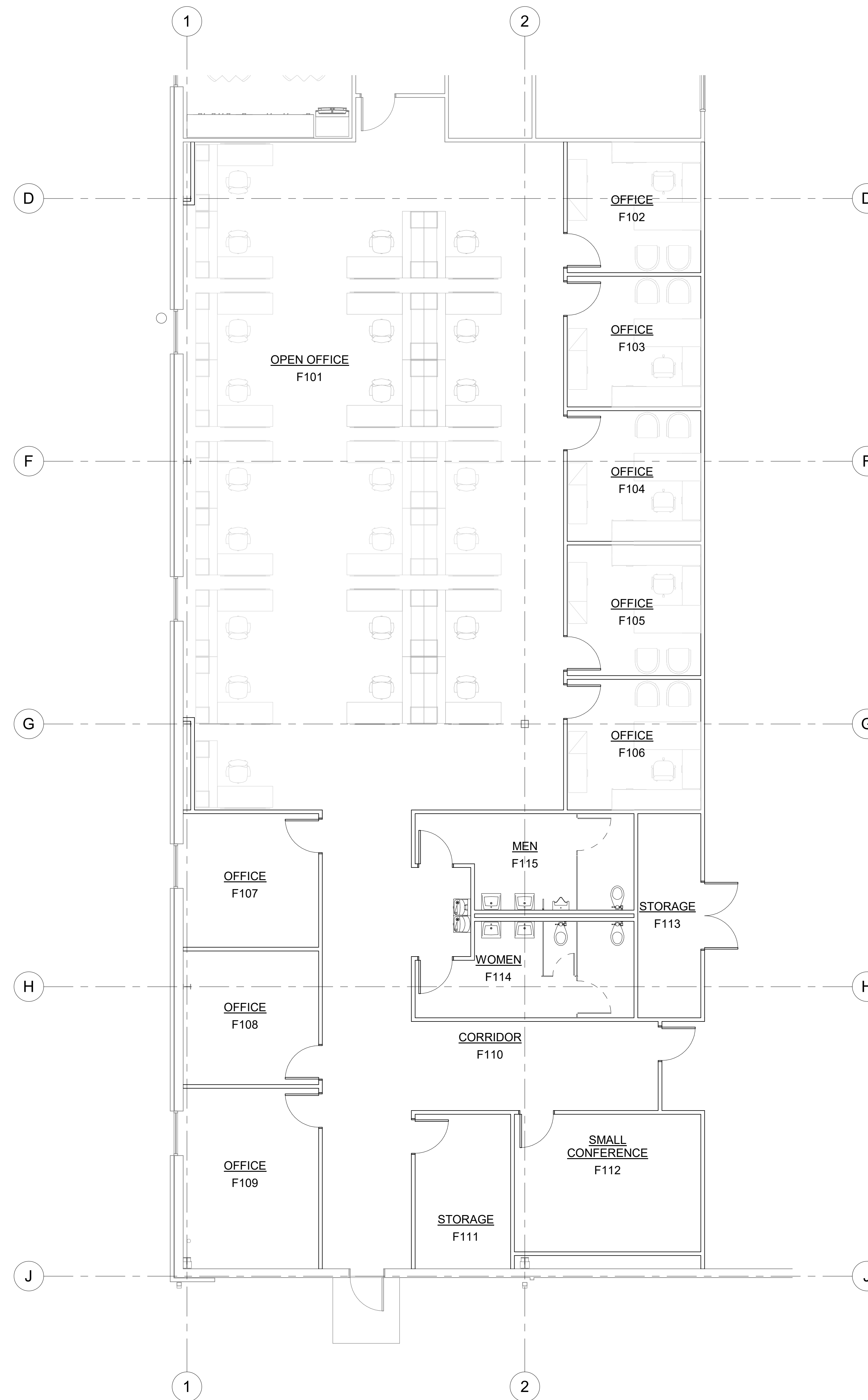


1 MAIN LEVEL PHASE II
A1.2 3/32" = 1'-0"



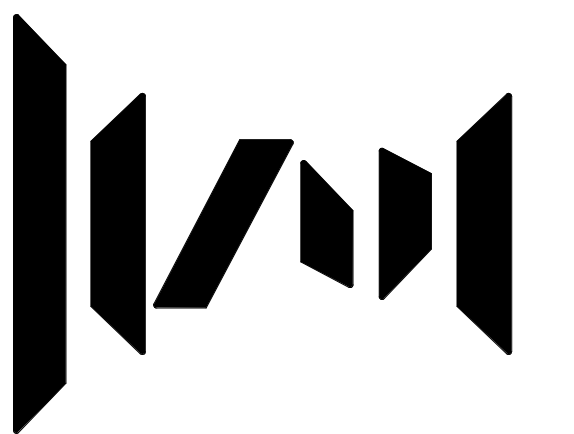
1
A1.3
ENLARGED OFFICE
PLAN

3/16" = 1'-0"



2
A1.3
ENLARGED OFFICE
PLAN PHASE II

3/16" = 1'-0"



Matheny Goldman

ARCHITECTURE + INTERIORS, LLC
108 WOODSON STREET, HUNTSVILLE, ALABAMA 35801
256.532.0968 | WWW.MATHENYGOLDMAN.COM
HUNTSVILLE | NASHVILLE

CONSULTANT'S LOGO

MILESTONES

DESIGN REVIEW 2019.08.23

A NEW FACILITY FOR
**ELECTRONICS BLVD.
WAREHOUSE**
HUNTSVILLE, ALABAMA

REVISIONS

REV	DESCRIPTION	DATE

PROJECT NO. 19-XXX

DRAWN BY CJS

CHECKED BY CJS

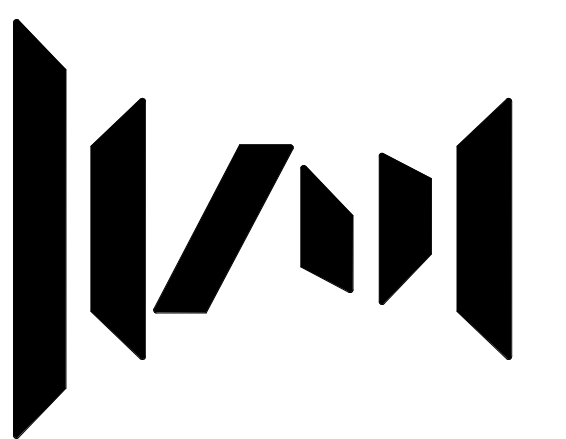
STAMP

SHEET TITLE

ENLARGED PLANS

A1.3

TOTAL SHEETS = XX



Matheny Goldman

ARCHITECTURE + INTERIORS, LLC
108 WOODSON STREET, HUNTSVILLE, ALABAMA 35891
256.532.0981 | WWW.MATHENYGOLDMAN.COM
HUNTSVILLE | NASHVILLE

CONSULTANT'S LOGO

MILESTONES

DESIGN REVIEW 2019.08.23

A NEW FACILITY FOR
**ELECTRONICS BLVD.
WAREHOUSE**
HUNTSVILLE, ALABAMA

REVISIONS

REV DESCRIPTION DATE

PROJECT NO. 19-XXX

DRAWN BY JPA

CHECKED BY RJP

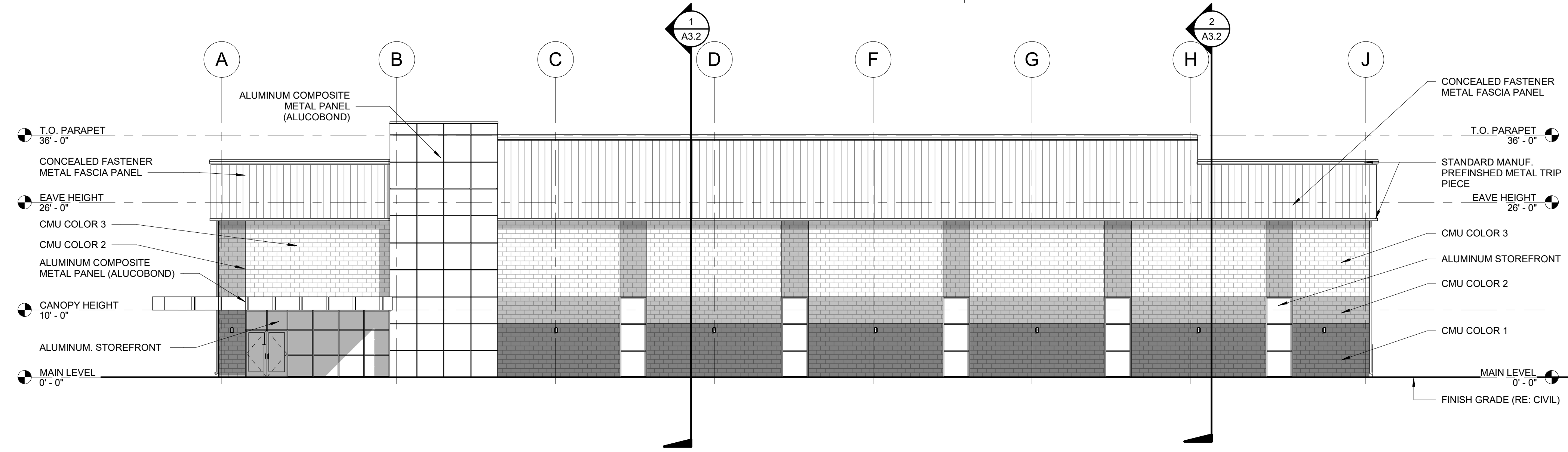
STAMP

SHEET TITLE

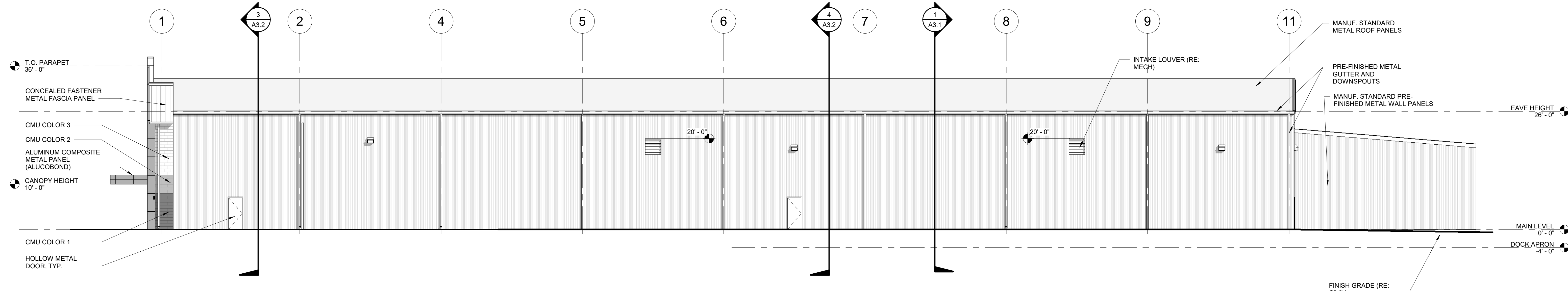
EXTERIOR ELEVATIONS

A2.1

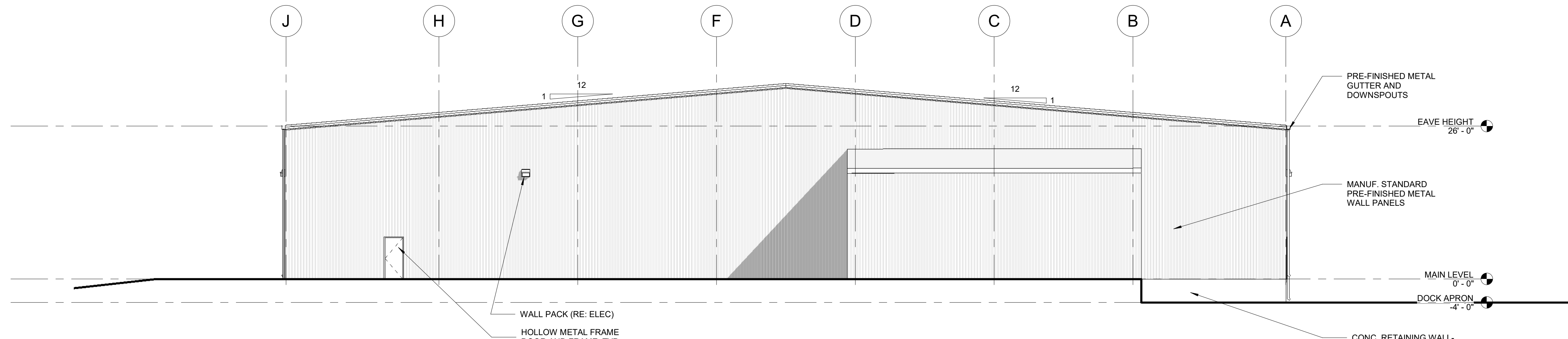
TOTAL SHEETS = XX



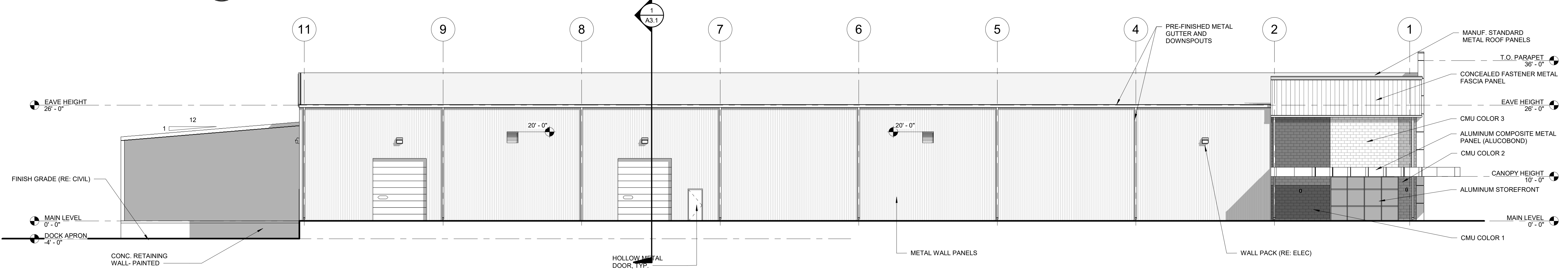
1 FRONT ELEVATION
3/32" = 1'-0"



2 RIGHT ELEVATION
3/32" = 1'-0"



3 REAR ELEVATION
3/32" = 1'-0"



4 LEFT ELEVATION
3/32" = 1'-0"